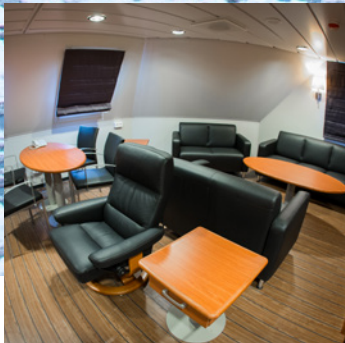
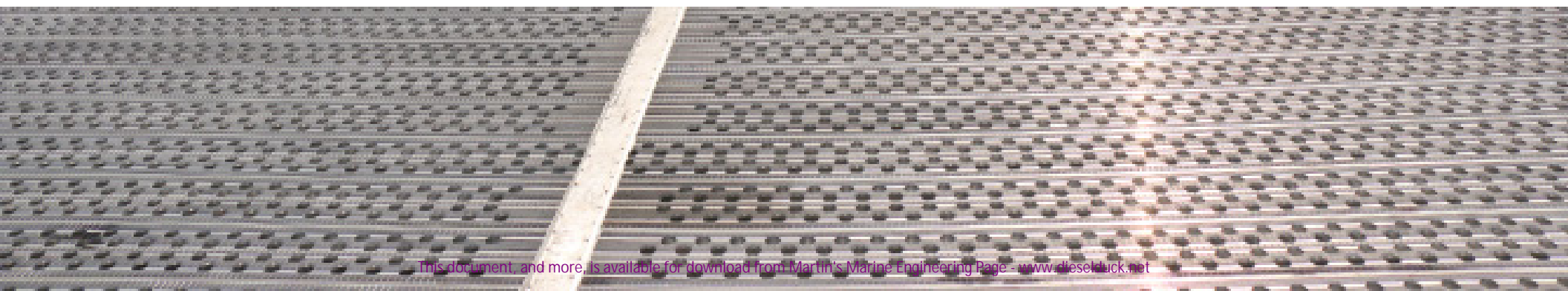




DAVIE



**HULL #717**





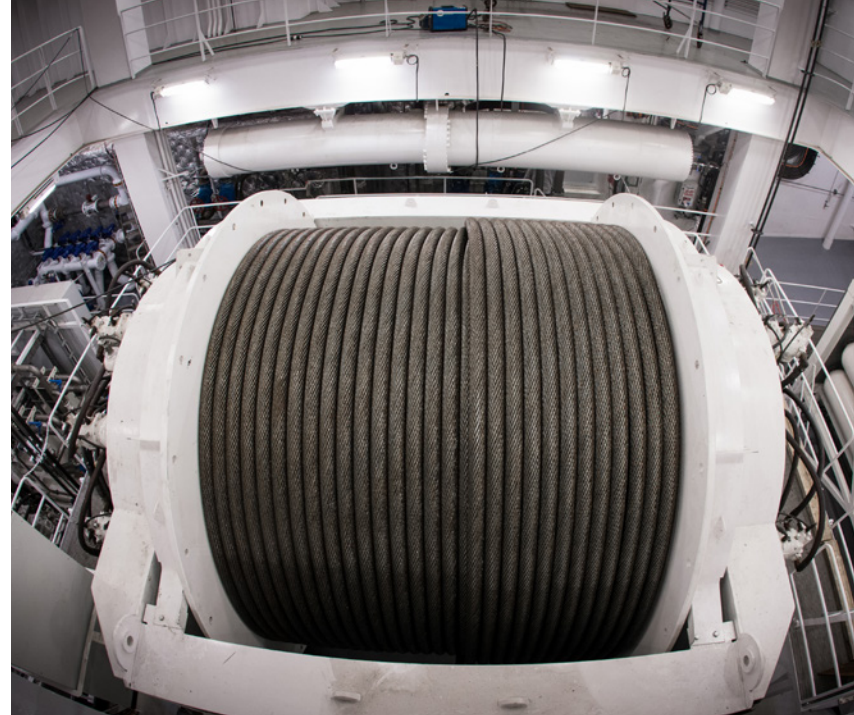
**Davie's 717th ship is a DPIII Subsea Construction Vessel - launched in October 2013.**

**The vessel is the first of a three-ship series being built at Canada's No.1 shipbuilder for export to Norwegian clients.**

**Outline specification:**

- 130m length x 28m beam
- Dynamically Positioned
- DPIII (3-level redundancy)
- Accommodation 103 PAX
- Comfort Class 3
- 250t subsea crane to 3000m
- 2 x R.O.V.s
- Pipelay ready
- Moonpool (7.5m x 7.5m)
- 22MW installed power
- 6 electric thrusters





## MULTIFUNCTIONALITY WITHOUT COMPROMISE

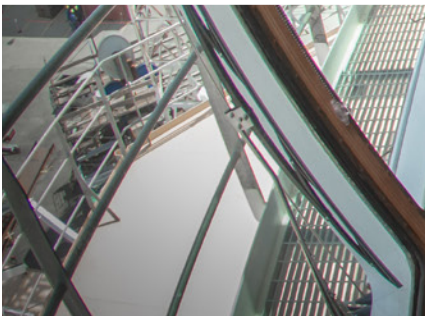
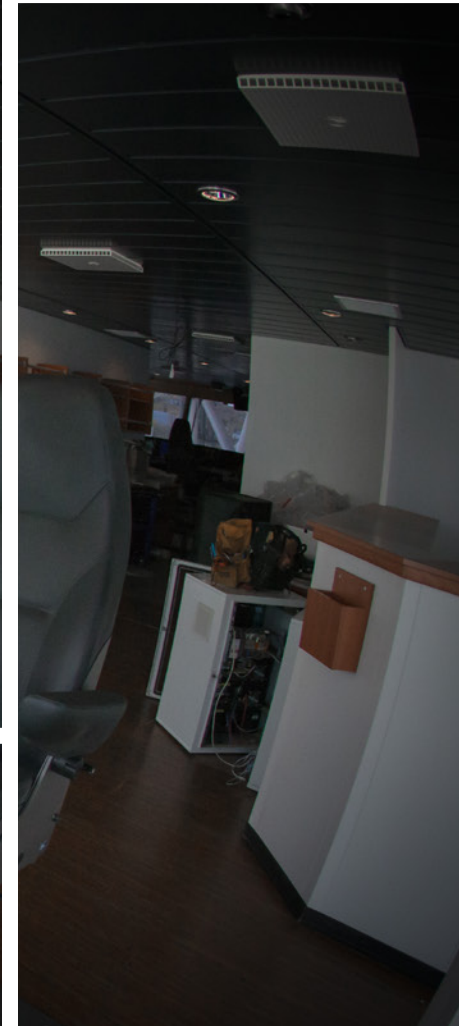
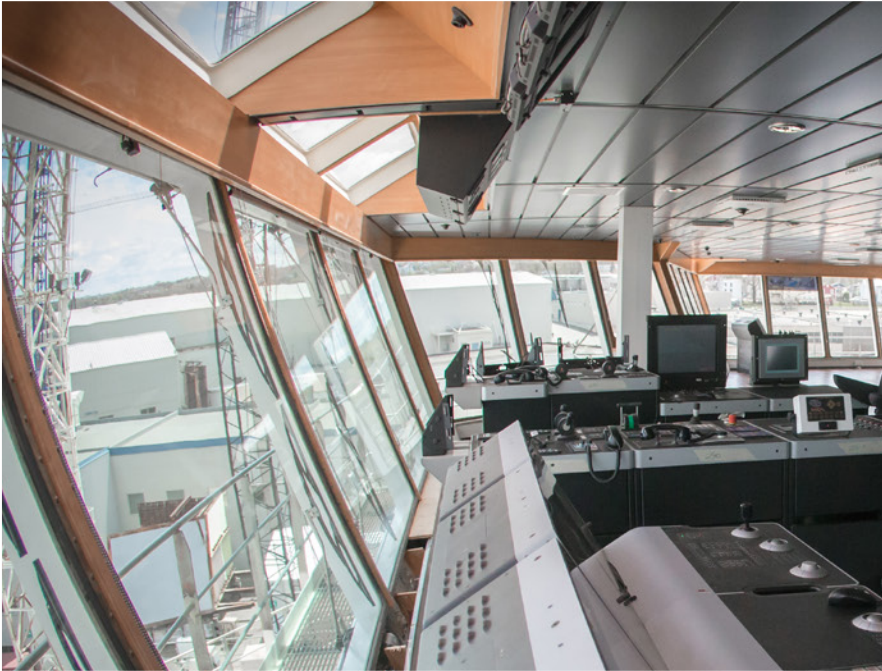
No expense has been spared in ensuring that Hull 717 is the best in class. Often when ships are built with multipurpose functionality in mind, compromises are made. Not on this ship. Hull 717 is fitted with a specially-designed active heave compensated crane whereby the unit's main components are located under-deck to ensure maintenance and operation in the harshest of environments. The crane is capable of lifting 250 tonnes in up to 3000 metres of water. A special nitrogen-based heave compensation system ensures that the crane hook and the load does not move even when the vessel is moving. The vessel is also fitted with an ultra-large 7.5m x 7.5m moonpool which allows items to be deployed and recovered through the centre of ship. A large ROV hangar accommodates two large, work-class Remotely Operated Vehicles which exit the vessel through sliding doors.



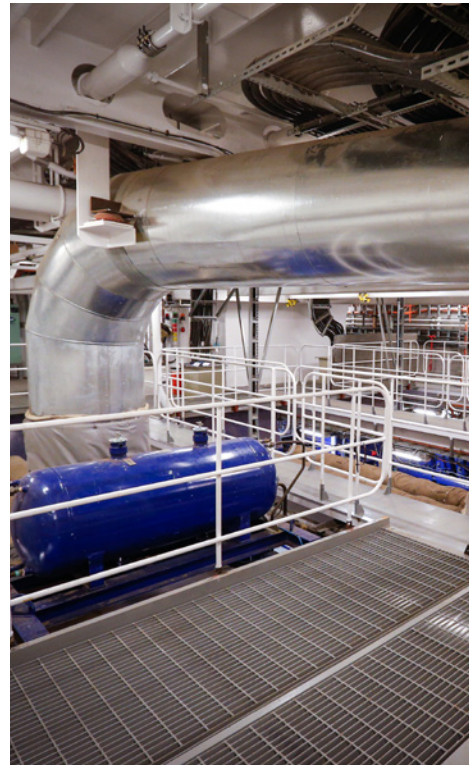


## STEERING THE SHIP FROM 13 LOCATIONS ONBOARD

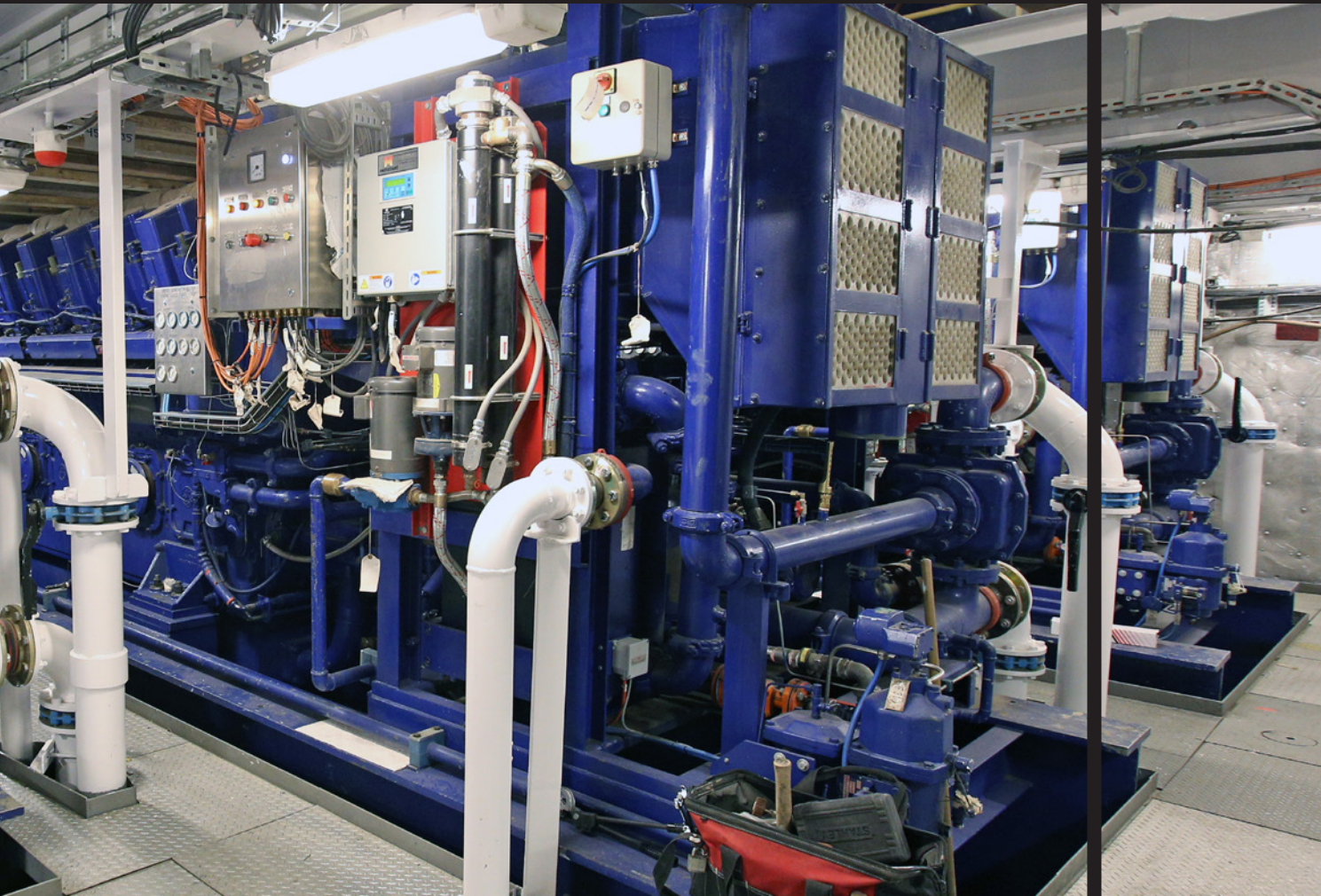
This is not your average ship. Not only does Hull 717 have a fully integrated bridge system, the vessel can also be controlled from thirteen locations throughout the vessel including from two remote control units. The dynamic positioning system uses seven referencing systems which ensure the vessel's six electrical thrusters can maintain the vessel in a fixed position in even the harshest operating environments. Because of the configuration of the thrusters, the vessel can move in all directions, including diagonally as well as rotating perfectly on its own axis.



The first thing which strikes you as you walk through H717 is the high level of finish and the quality of the equipment installed. The quality of workmanship at Davie is a result of over 185 years of building mission-critical vessels for the commercial and governmental markets.





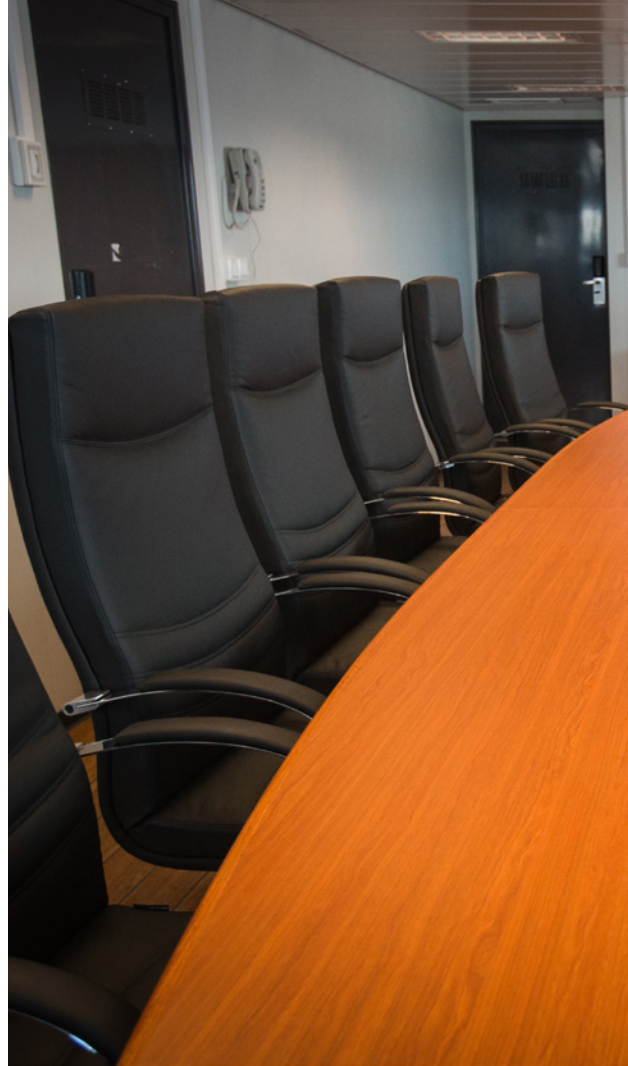


## **MORE REDUNDANCY THAN A WARSHIP**

The VS4220 Subsea Construction Vessel is designed to perform a variety of functions in some of the harshest environments. Functions range from laying of pipes several kilometres below the surface to saturation diving to the operation of remotely operated vehicles. Operating in mission-critical roles such as these means ensuring that in the event of any or even multiple failures, the ship will always be able to maintain its ability to hold position and maneuver.

The six engines onboard provide twenty two megawatts of power to six electrical thrusters. Every system is built in with three levels of redundancy to ensure that the vessel can hold station in the event of multiple flooding, fires or machinery failures.

When we say more redundancy than a warship, we really mean it.

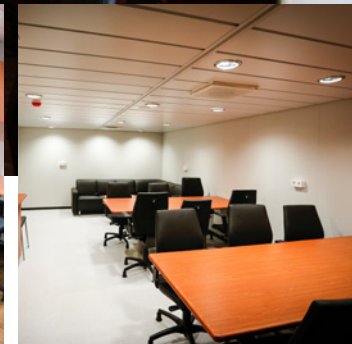
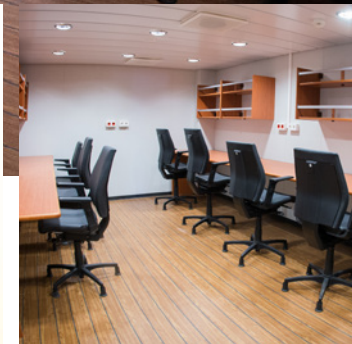


## A PLACE TO WORK

Hull 717 is equipped with a wide variety of working spaces including offices, conference rooms, control rooms and more. Every working space is equipped with LAN, telephones, internet and more. Operations control rooms are equipped with their own servers which are connected throughout the vessel for plug and play use, should the client require their own network onboard. Offices and operations control rooms are also fitted with their own closed circuit television system controls and screens so that all areas on board the vessel can be monitored.



Crew comfort was always a top priority when building H717. All working spaces are fitted with comfortable Italian leather furniture. All working spaces and offices are also fitted with triple-glazing and sound insulation. Refreshment areas and toilet facilities are located in close proximity to every working area to ensure crew and clients can carry out their work on board the vessel with minimal disruption and in maximum comfort.





## LUXURIOUS ACCOMMODATION FOR OVER 100 PERSONNEL

It's not only that all cabins are equipped with internet, satellite television, two telephones and their own bathroom. The ship is also built to the Comfort Class 3 notation which means we have done everything possible to ensure that people onboard are exposed to the minimum amount of noise and vibration and that there is enough room to move comfortably around the accommodation. Every cabin has triple glazing so everyone can get a good night's sleep while work continues 24 hours a day. Every space within the accommodation is equipped with underfloor heating as well as its own controllable thermostat for heating and air conditioning. Much like a hotel, each cabin also has its own key card entry system. The accommodation is fully conformant with all international regulations including those required for operations on the Norwegian continental shelf. All equipment on board is certified to European Union regulations.



Attention to detail is not missed on board Hull 717. The interior is outfitted with Italian imported leather furniture and exotic, fire-retardant woods are a key feature throughout the accommodation. Each cabin is fitted with a Sony Bravia HD television which provides a choice of satellite channels wherever the ship may be operating. Ergonomic and minimalistic design throughout the ship means comfortable, airy spaces which are a pleasure to live and work in.





## COMFORT GUARANTEED

Onboard H717 you can find all the amenities you would need for a prolonged stay offshore. The fully-fitted galley and dining room provides a light and airy atmosphere to eat. The fully equipped gym provides a place to workout. The large sauna is able to accommodate 8 people at a time and has its own shower facilities and changing area outside. Elsewhere on the ship are several lounges, including a smokers lounge equipped with powerful extractor fans. Lounges provide a comfortable place to relax. The ship is also fitted with an internet cafe on the deck level so that crew are able to surf the web while on their breaks without needing to retreat to their cabins. All decks are serviced by an elevator.





[www.davie.ca](http://www.davie.ca)